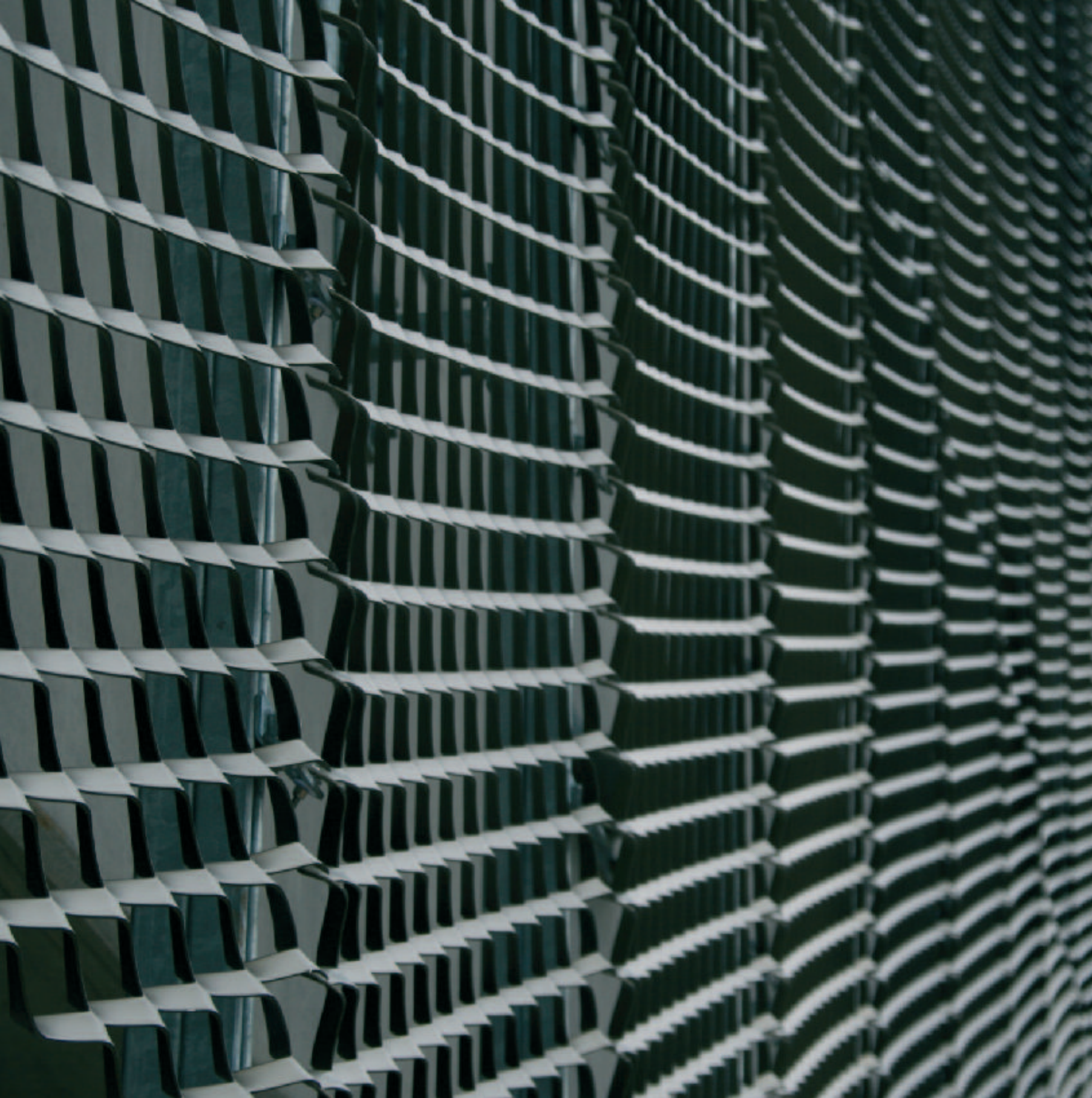




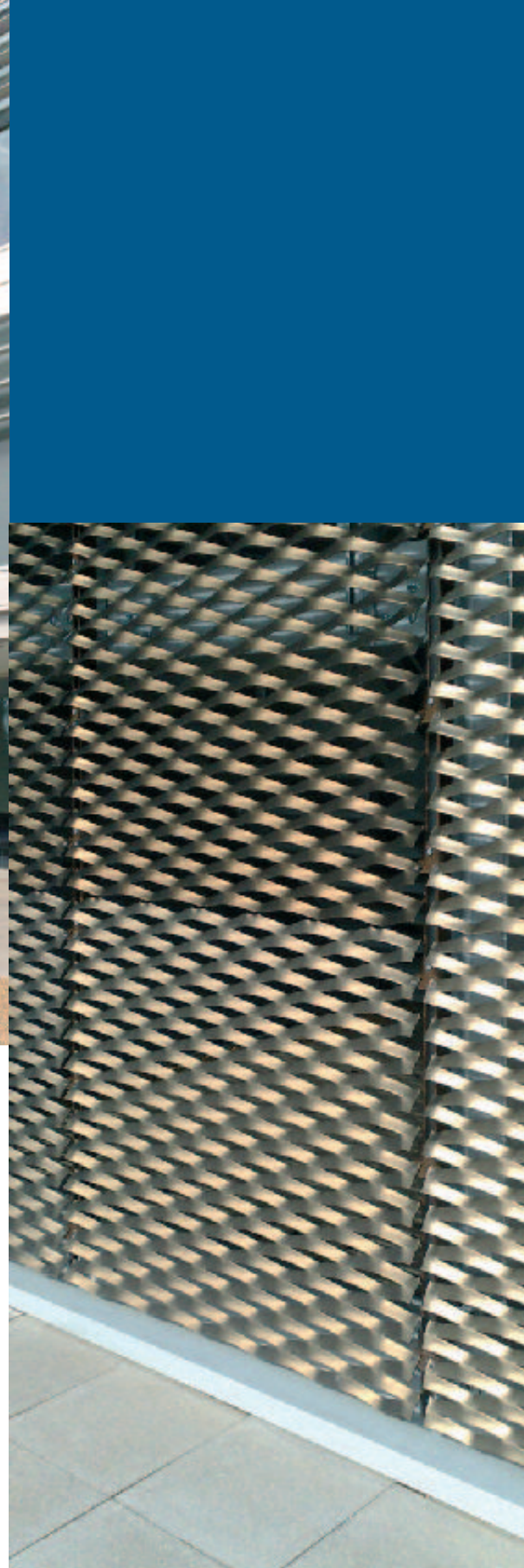
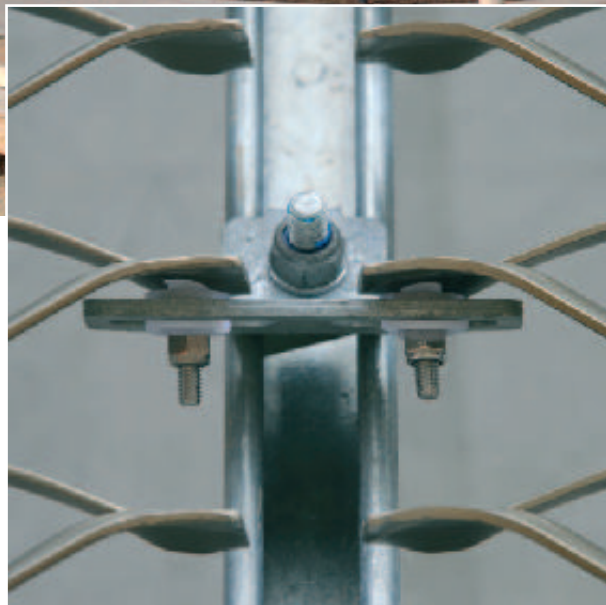
vision

expanded metal façade



Vision expanded metal
for architecture,
engineering, screening,
security, ventilation,
changing appearances,
transparency, solar
protection and
corporate identity.

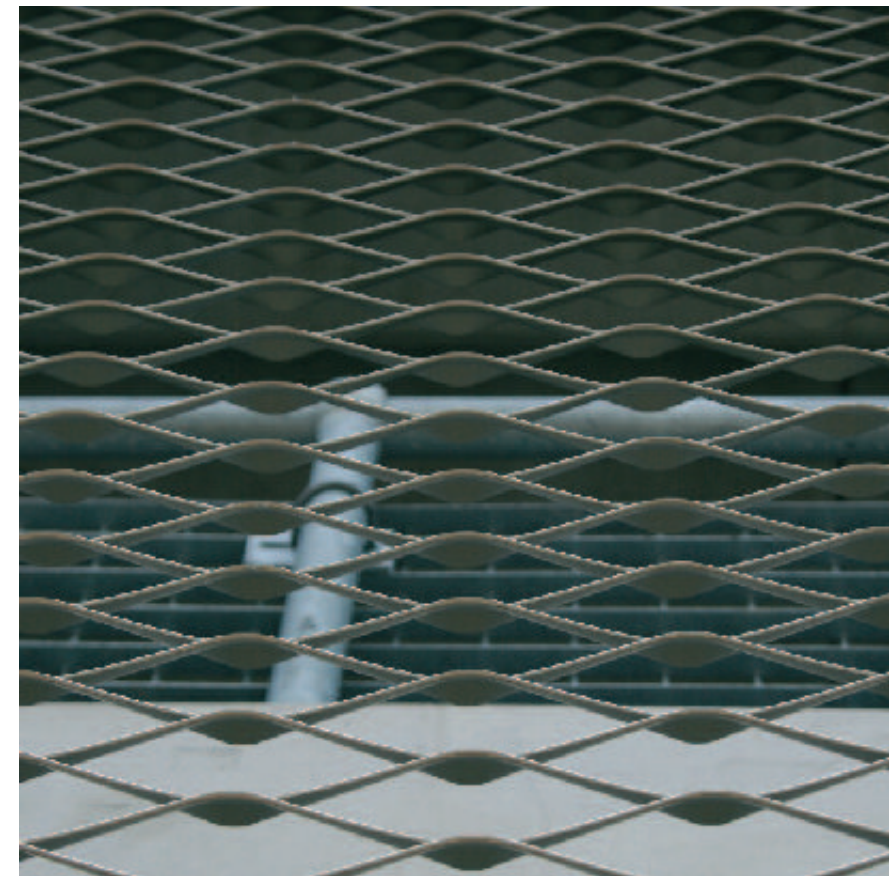
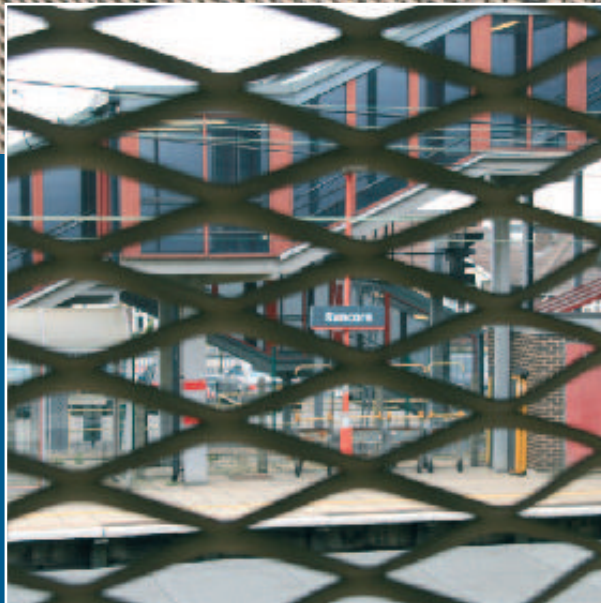
webb
neutra
fehn




A service designed to complement the exceptional quality of the vision range. Vision**plus** gives you access to our dedicated team of experts, who will help you achieve the best and most cost-effective results from specification to installation.

With vision**plus** you get full technical support, site visits and input at all stages of your project.

- CAD/email facilities for rapid drawing exchange
- Fabrication and structural steel work services
- Installation by approved contractors





vision webb

Long Way of mesh dimension 203mm

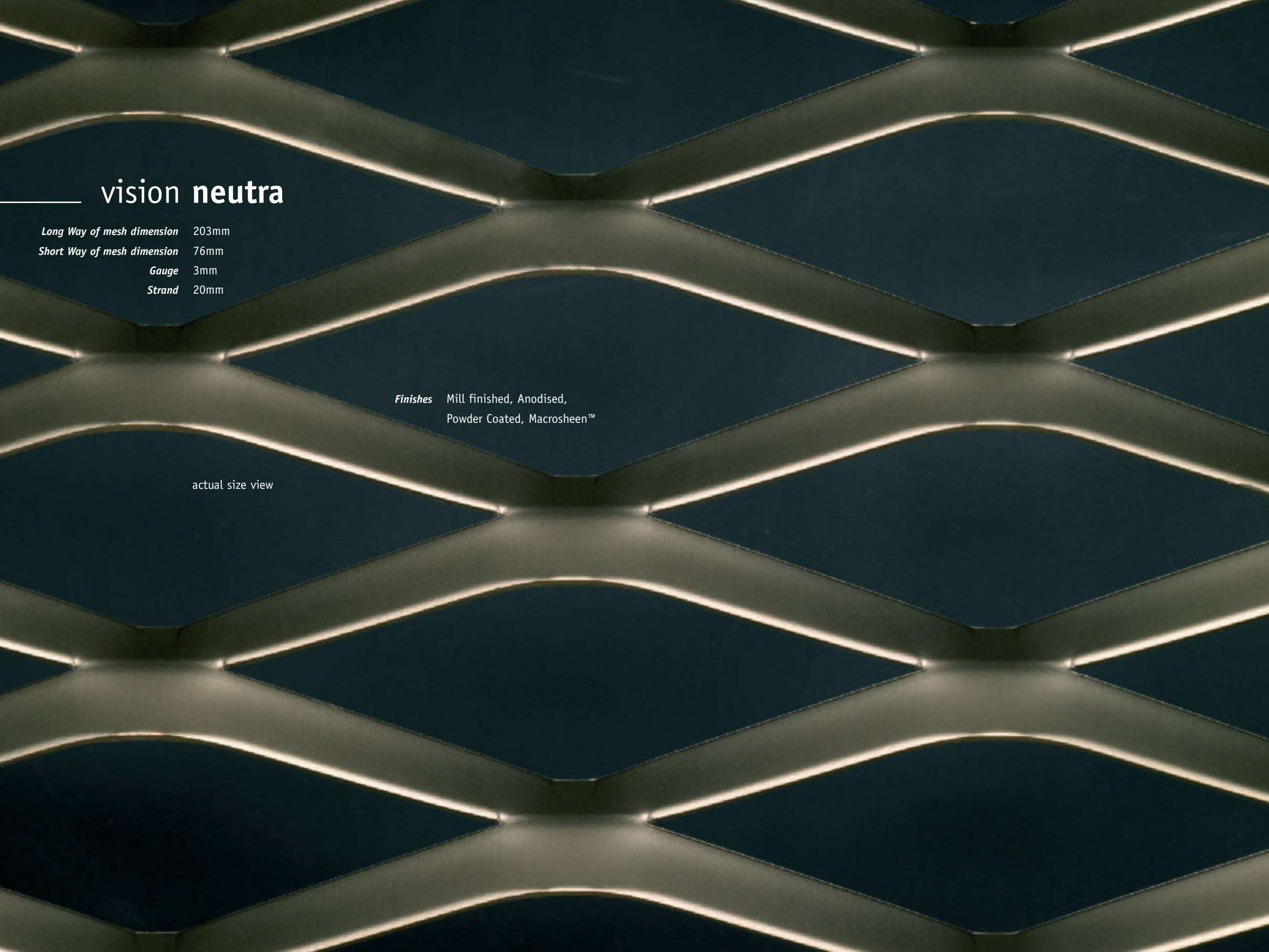
Short Way of mesh dimension 76mm

Gauge 4mm and 5mm

Strand 30mm

Finishes Mill finished, Anodised,
Powder Coated, Macrosheen™

actual size view



vision neutra

Long Way of mesh dimension 203mm


Short Way of mesh dimension 76mm

Gauge 3mm

Strand 20mm

Finishes Mill finished, Anodised,
Powder Coated, Macrosheen™

actual size view

A close-up photograph of a metal mesh featuring a repeating pattern of diamond-shaped openings. The mesh is made of a light-colored metal, possibly aluminum, with a smooth finish. The lighting creates a strong contrast between the raised edges of the mesh and the dark, recessed areas of the diamond holes, giving it a three-dimensional appearance.

vision fehn

*Long Way of
mesh dimension* 114mm

*Short Way of
mesh dimension* 48mm

Gauge 3mm

Strand 20mm

Finishes Mill finished, Anodised,
Powder Coated, Macrosheen™

actual size view

vision expanded

Expanding possibilities

The beauty of the expanding process is the ease with which the characteristics of the material can be transformed. From a single tool, altering the aperture and the strand of a mesh allows us to create the optimum reflectivity, solar shading, airflow and translucence for each architectural application.

If a specific pattern is required – for instance to match the scale of other features – our on-site toolmaking allows quick turnaround of bespoke tooling.

With our range of suitable materials including brass, copper, corten, steel and alloys, together with the many available coatings, the possibilities are almost limitless.

vision fixings

Modular components manufactured and tested to allow fast installation, adaptable to face fixing or flat slab fixing installations.

Bespoke components can be manufactured to create different effects like cantilevered panels.

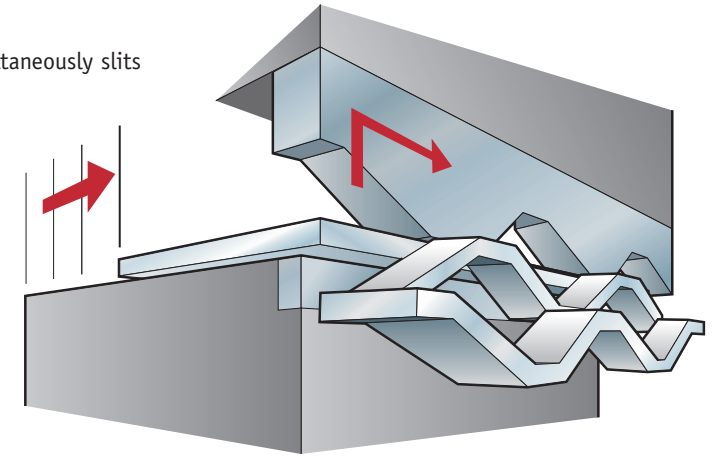
Framed expanded metal systems are also available which allow installation from the inside and provide a pedestrian barrier which conforms to BS 6180.



technical details

The expanding process simultaneously slits and stretches longitudinally, expanding the slits into a diamond shape.

The sheet advances between the top and bottom tool as the top tool indexes left and right.



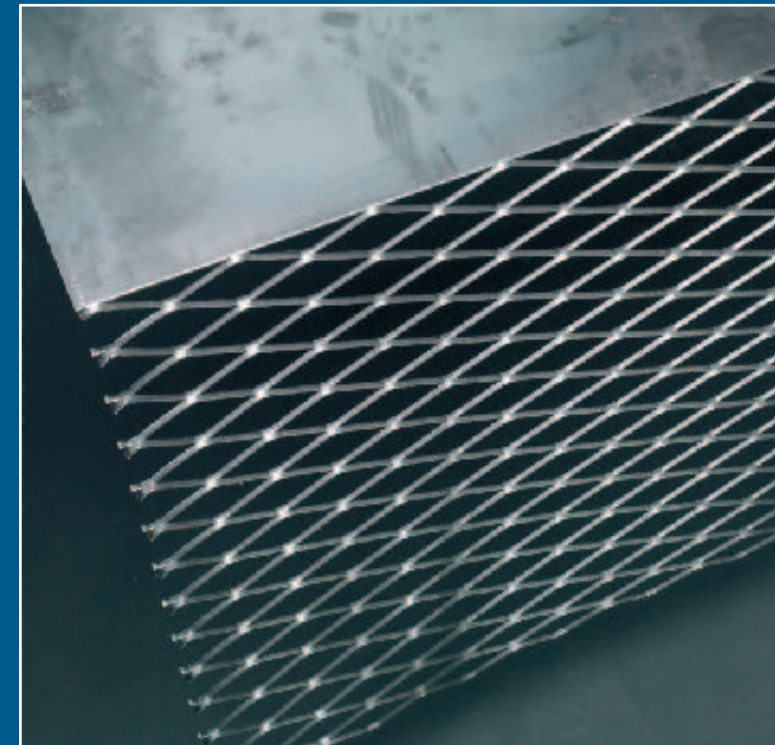
advantages expanded metal

No metal is lost in the expanding process. The final product is longer, stronger and lighter than the original plain sheet. The strands and knuckle of the diamond form an angle to the original plane of the sheet, adding strength and rigidity.

Aluminium expanded cladding can be recycled again and again without loss of quality to the aluminium.

The re-melting of aluminium requires little energy; it saves up to 95% of the energy required for primary aluminium production.

Being secure and breathable it offers natural ventilation through its transparent appearance making it an excellent choice for façade applications.



finishing options

Ashlok™ Anodising

A process using electro colouring which follows anodising by passing an alternating current to the item whilst in a tin solution. By varying the time of the processing, shades of bronze are produced ranging from silver to champagne, light or dark bronze and black.

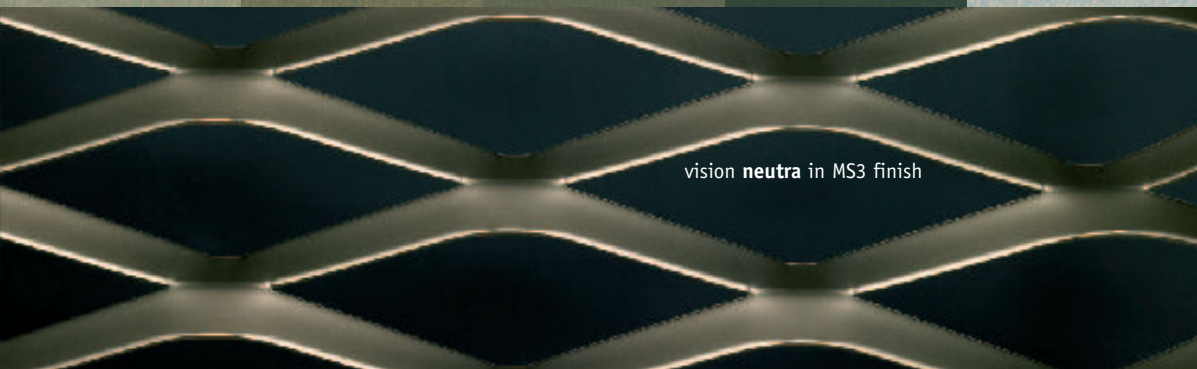


Powder Coating

Available in standard RAL colours and specialist metallic finishes.

Macrosheen™

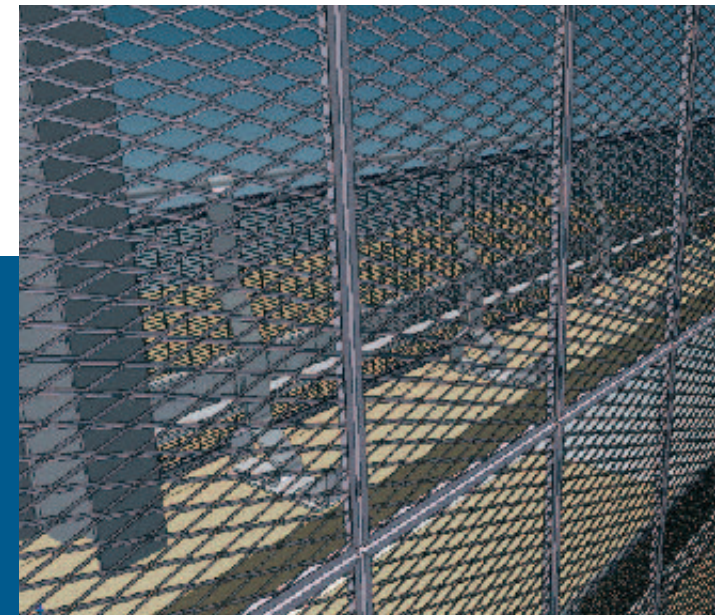
A colourful alternative to anodising based on a pearlescent fluropolymer system which incorporates durable ceramic pigmentation and is available in a wide selection of pearlescent colours. It offers complete batch to batch consistency, is more ductile and less prone to site damage with increased resistance to abrasion.



associated products

PROTECTA-CLAD

Protecta-Clad uses Berry Systems barriers which independently tests at MIRA. The full range of Berry Spring Steel Buffers conforms with BS 6399. Framed expanded cladding is then fixed back to the spring steel buffer mounting plates allowing fixing from the inside. In addition, the cladding element of Protecta-Clad can be specified to meet the pedestrian loading requirements of BS 6180 so that no pedestrian handrail is required on the main perimeter. Alternatively, a handrail can be mounted onto the barriers in the normal way.





Alma Street
Smethwick
West Midlands
B66 2RP
Tel: 0121 558 8921
Fax: 0121 565 1354

www.ashlacyperf.co.uk
e-mail: sales@ashlacyperf.co.uk